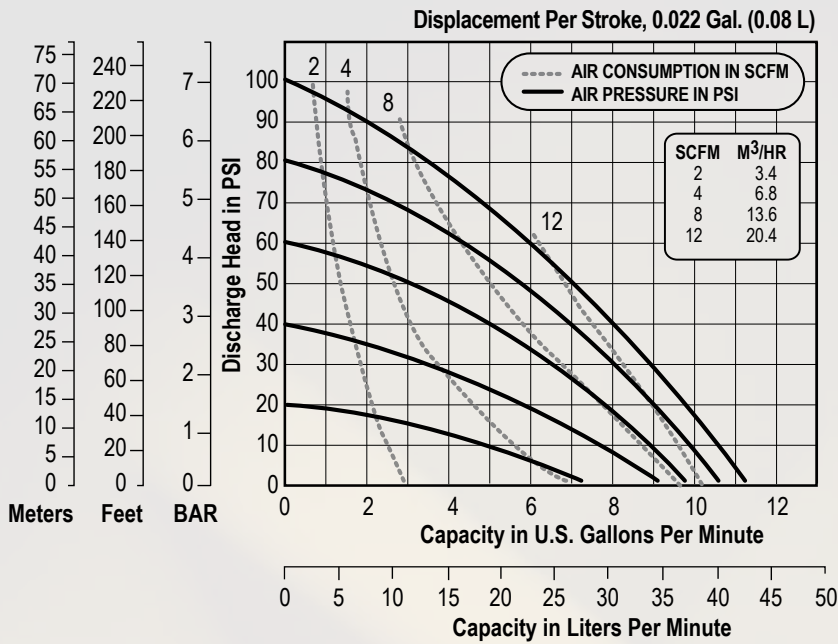


# 1/2" Elima-Matic Bolted Plastic

with Metallic and Non-Metallic Center Sections

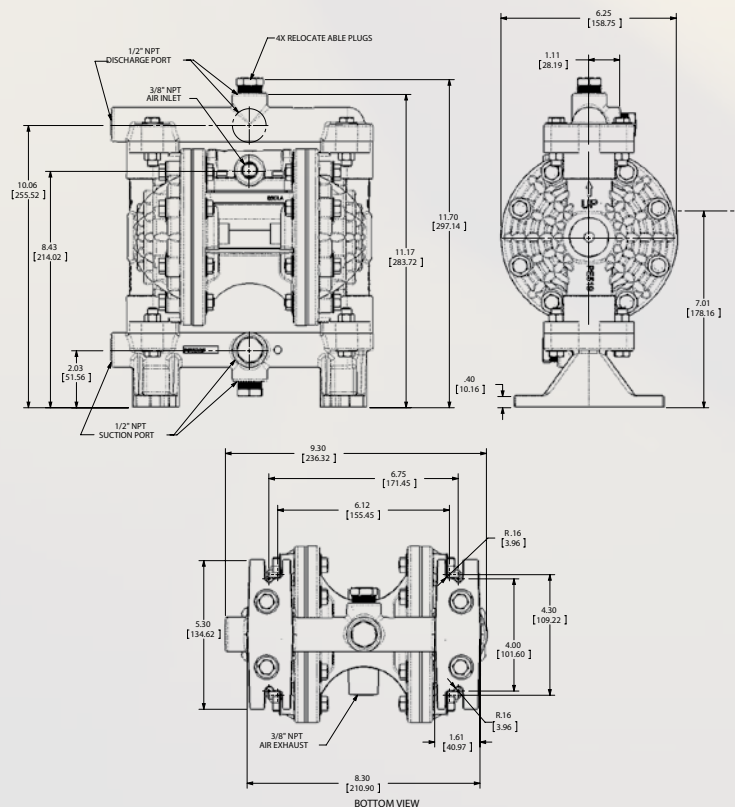
# E5

## Performance



**NOTE:** Performance based on the following: elastomeric fitted pump, flooded suction, water at ambient conditions. The use of other materials and varying hydraulic conditions may result in deviations in excess of 5%.

## Dimensions



## Specifications

### Flow Rate

Adjustable to ..... 0-11 gpm (53 lpm)

### Port Size

Suction ..... 1/2" NPT

Discharge ..... 1/2" NPT

**Air Inlet** ..... 3/8" NPT

**Air Exhaust** ..... 3/8" NPT

### Suction Lift

Dry ..... 12' (3.6 m)

Wet ..... 30' (9.1 m)

### Max Solid Size (Diameter)

..... 1/16" (1.6 mm)

**Max Noise Level** ..... 86 dB(A)

### Shipping Weights

Polypropylene ..... 8.5 lbs (3.9 kg)

PVDF ..... 12 lbs (5.4 kg)

